

Start Date	19DEC06	Early Bar
Finish Date	30APR07	Progress Bar
Data Date	19DEC06	Critical Activity

WP06

Sheet 1 of 8

CHUN WO CONSTRUCTION & ENGINEERING CO. LTD.
CONTRACT NO. HY/2004/09
IMPROVEMENTS TO SAN TIN INTERCHANGE
Works Programme (WP06)

Date	Revision	Checked	Approved
26JUN06	Working Programme Rev. WP04		J. Yip
03OCT06	Working Programme Rev. WP05		J. Yip
23JAN07	Working Programme Rev. WP06	EPG	J. Yip

Activity ID	Activity Description	Orig Dur	Early Start	Early Finish	2007																	
					DEC 25	JAN 1	JAN 8	JAN 15	JAN 22	JAN 29	FEB 5	FEB 12	FEB 19	FEB 26	MAR 5	MAR 12	MAR 19	MAR 26	APR 2	APR 9	APR 16	APR 23
SS2-CAS020	Dismantle Existing Traffic Sign	1	09FEB07	09FEB07																		
SS2-CAS030	Excavation for 300mm Drain Pipe & M/H M8.8	2	10FEB07	12FEB07																		
SS2-CAS040	Install 300mm Drain Pipe & Backfill	2	13FEB07	14FEB07																		
SS2-CAS050	Excavation for 450mm Drain Pipe & M/H M8.7	2	10FEB07	12FEB07																		
SS2-CAS060	Install 450mm Drain Pipe & Backfill	2	13FEB07	14FEB07																		
SS2-CAS070	Excavation for 525mm Drain Pipe	2	27FEB07	28FEB07																		
SS2-CAS080	Install 525mm Drain Pipe & Backfill	3	01MAR07	03MAR07																		
SS2-CAS090	Construct M/H M8.7 & M8.8 & Backfilling	5	01MAR07	06MAR07																		
SS2-CAS100	Construction of 450 U-channel	5	07MAR07	12MAR07																		
SS2-CAS110	Perm. Flexible Pavement	8	13MAR07	21MAR07																		
SS2-CAS120	Landscaping Works / Paving to Island	15	13MAR07	29MAR07																		

Crossing San Sham Rd (Portion under the Bridge)

CAS-SSX010	Bulk Exc (Partial Rem of Existing Slope @ Abut)	7	23JAN07*	30JAN07																		
CAS-SSX020	1500dia Drain @ EM10-EM9	10	31JAN07	10FEB07																		
CAS-SSX030	Other Drainage Around Cut-back Wall & Drain Pits	20	12FEB07	17MAR07																		
CAS-SSX040	Install FRP Panel (Front of South Abutment Wall)	5	21APR07	26APR07																		
CAS-SSX050	Sub-base and Kerb Installation	6	19MAR07	24MAR07																		
CAS-SSX060	Road Pavement for the Additional Lane	12	26MAR07	12APR07																		
CAS-SSX070	Footpath Construction & Island	5	11APR07	16APR07																		
CAS-SSX080	Install Handrails	2	17APR07	18APR07																		

MODIFICATION TO SAN SHAM RD. SOUTH ABUTMENT

Temporary Traffic Arrangement

SS2-SS1010	Advice to RMO for Inspection (7days advance)	0		23JAN07*																		
SS2-SS1020	Install Steel Plate @ Southbound Lane	1	23JAN07*	23JAN07																		
SS2-SS1030	Pre-opening Inspection of TTA w/ RMO	1	01FEB07	01FEB07																		
SS2-SS1040	Implement TTA & Traffic Diversion of S/B	2	01FEB07	02FEB07																		
SS2-SS1050	Install Steel Plate @ Northbound Lane (Night)	1	02FEB07	02FEB07																		

Reinforced Earth Wall (Retaining Wall)

SS2-RTW010	1st Stage Exc. & Install 254x254x132kg/m UC	4	03FEB07	07FEB07																		
SS2-RTW020	2nd Stg Exc 1500x1300D Locally & Install Bracket	6	08FEB07	14FEB07																		
SS2-RTW030	2nd Stg Exc & Install Beams & Post	2	13FEB07	14FEB07																		
SS2-RTW040	3rd Stg Exc 1300D & Install 152x152x30kg/m UC	4	27FEB07	02MAR07																		
SS2-RTW050	Exc to Form. Level & Install Walings & Struts	8	03MAR07	12MAR07																		
SS2-RTW060	Rock Fill & Blinding Concrete	2	13MAR07	14MAR07																		
SS2-RTW070	Erect F/W of Base Slab up to Kicker	1	15MAR07	15MAR07																		
SS2-RTW080	Rebar fixing to Base Slab & Wall Starter Bars	2	16MAR07	17MAR07																		
SS2-RTW090	Concreting of Base Slab & Wall Kicker	1	19MAR07	19MAR07																		
SS2-RTW100	Rebar Fixing to Wall	3	20MAR07	22MAR07																		
SS2-RTW110	Erect F/W & Scaff. for Wall & Cantilever Slab	3	23MAR07	26MAR07																		
SS2-RTW120	Concreting to Wall	1	27MAR07	27MAR07																		
SS2-RTW130	Rebar Fixing to Cantilever Slab	2	28MAR07	29MAR07																		
SS2-RTW140	Concreting to Cantilever Slab	1	30MAR07	30MAR07																		
SS2-RTW150	Curing	7	31MAR07	12APR07																		
SS2-RTW160	Dismantle F/W & Scaff. to Wall & Cantilever Slab	2	13APR07	14APR07																		
SS2-RTW170	1st Stage Backfill in Layer (Grade 200 Rockfill)	4	16APR07	19APR07																		
SS2-RTW180	2nd Stage Backfilling (General Fill)	1	20APR07	20APR07																		

Road Works

SS2-SS1060	Perm. Flexible Pavement (North & South Bound)	6	20APR07	26APR07																		
------------	---	---	---------	---------	--	--	--	--	--	--	--	--	--	--	--	--	--	--	--	--	--	--

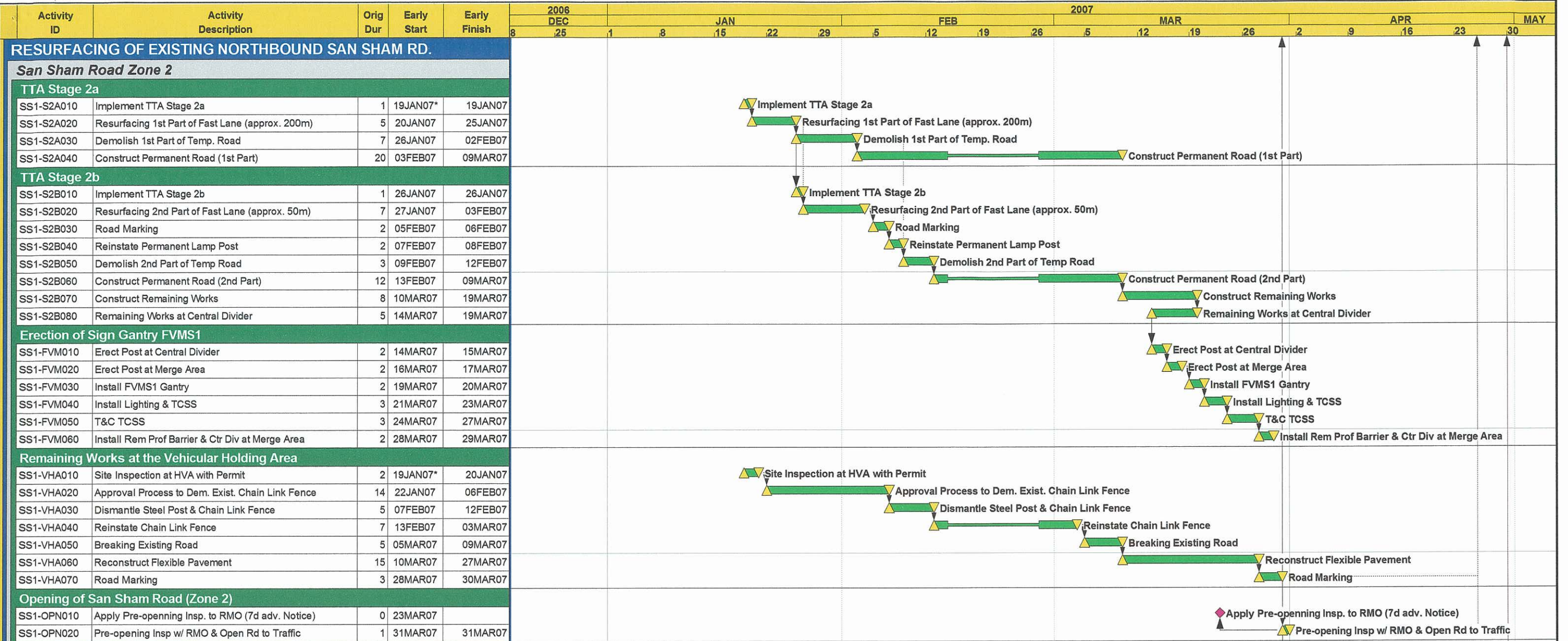
Start Date	19DEC06
Finish Date	30APR07
Data Date	19DEC06



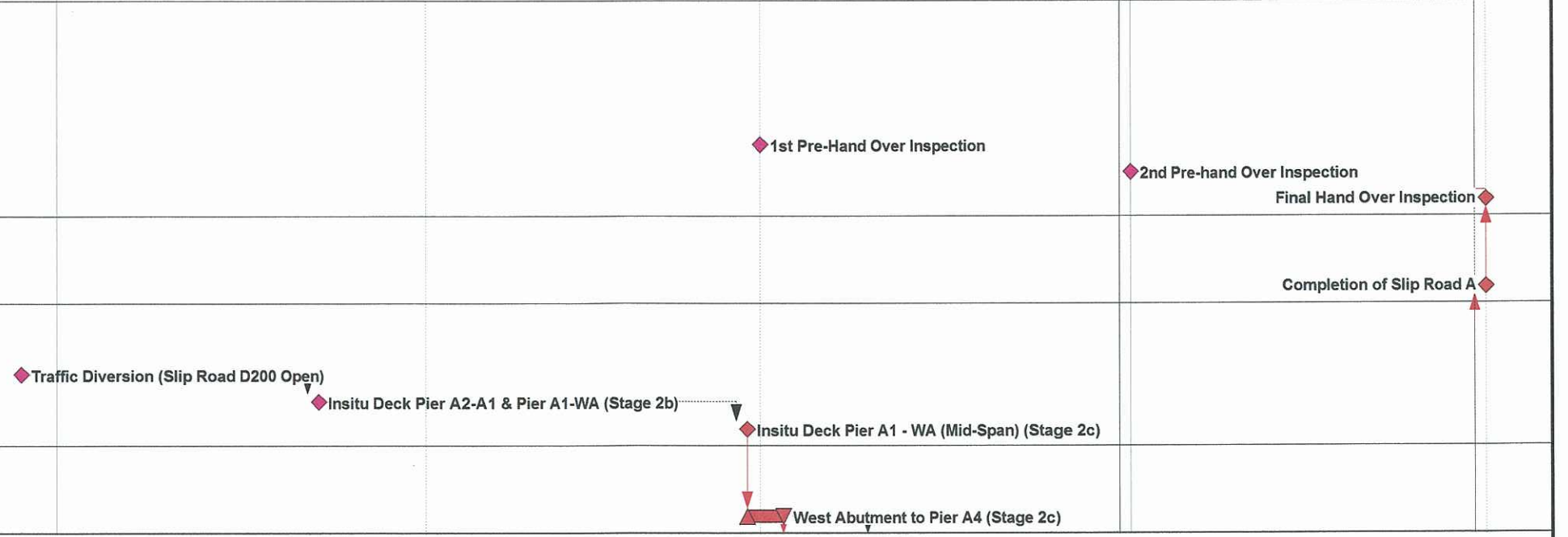
WP06

CHUN WO CONSTRUCTION & ENGINEERING CO. LTD.
CONTRACT NO. HY/2004/09
IMPROVEMENTS TO SAN TIN INTERCHANGE
Works Programme (WP06)

Date	Revision	Checked	Approved
26JUN06	Working Programme Rev. WP04		J. Yip
03OCT06	Working Programme Rev. WP05		J. Yip
23JAN07	Working Programme Rev. WP06	EPG	J. Yip



SECTION IV OF THE WORKS				
ELEVATED SLIP ROAD 'A' (WA - Pier A4)				
Pre-Hand-over and Hand-over Inspection				
ESA-INSP01	1st Pre-Hand Over Inspection	0		28FEB07*
ESA-INSP11	2nd Pre-hand Over Inspection	0		31MAR07*
ESA-INSP21	Final Hand Over Inspection	0		30APR07
Key Dates				
ESA-KEY010	Completion of Slip Road A	0		30APR07
Milestone Dates				
ESA-MILS01	Traffic Diversion (Slip Road D200 Open)	0		28DEC06*
ESA-MILS02	Insitu Deck Pier A2-A1 & Pier A1-WA (Stage 2b)	0		22JAN07*
ESA-MILS03	Insitu Deck Pier A1 - WA (Mid-Span) (Stage 2c)	0		27FEB07*
Prestress Bottom Continuity				
ESA-PRES01	West Abutment to Pier A4 (Stage 2c)	3	28FEB07	02MAR07



Start Date 19DEC06
 Finish Date 30APR07
 Data Date 19DEC06

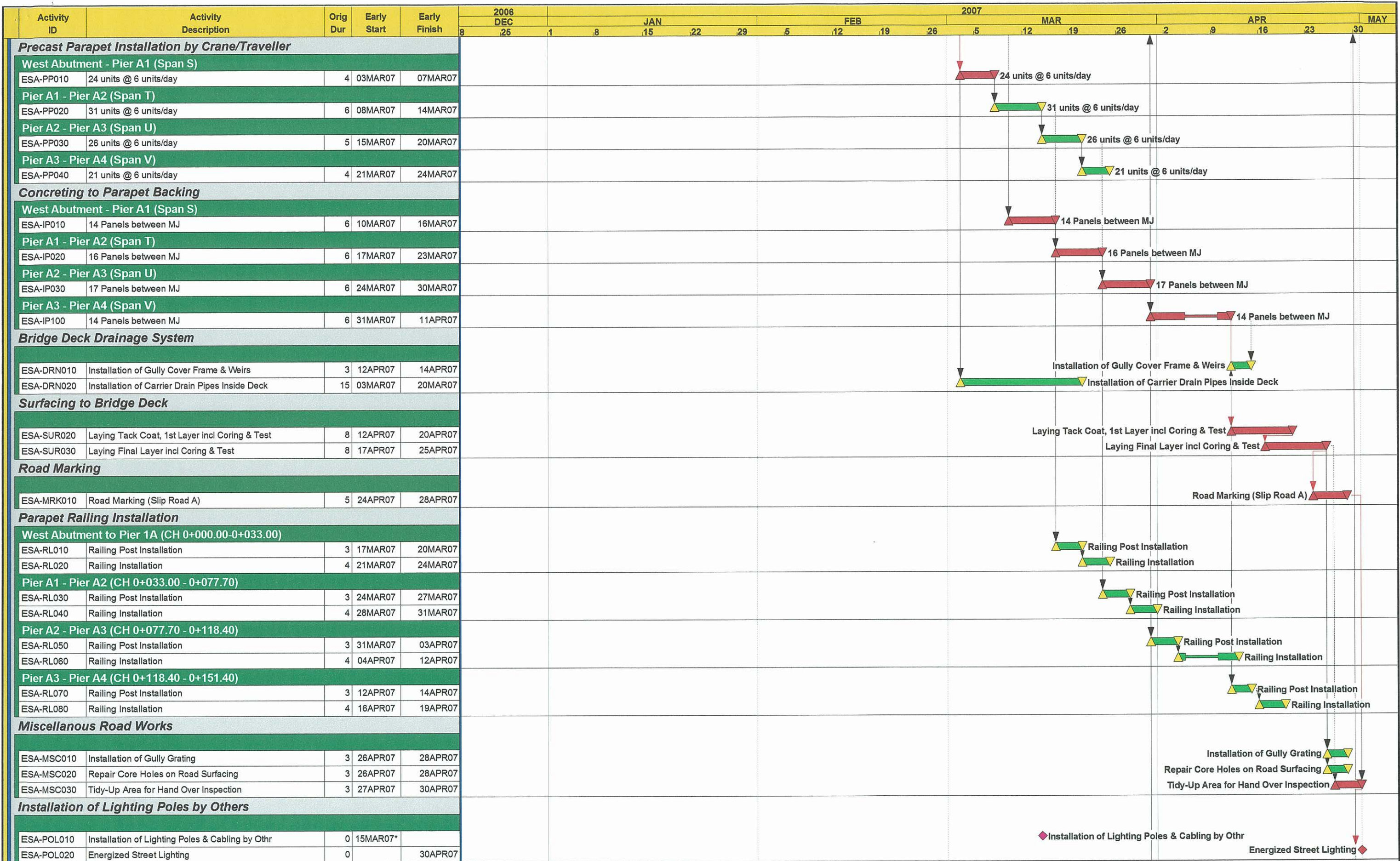
© Primavera Systems, Inc.

WP06

CHUN WO CONSTRUCTION & ENGINEERING CO. LTD.
 CONTRACT NO. HY/2004/09
 IMPROVEMENTS TO SAN TIN INTERCHANGE
 Works Programme (WP06)

Sheet 3 of 8

Date	Revision	Checked	Approved
26JUN06	Working Programme Rev. WP04	J. Yip	J. Yip
03OCT06	Working Programme Rev. WP05	J. Yip	J. Yip
23JAN07	Working Programme Rev. WP06	EPG	J. Yip



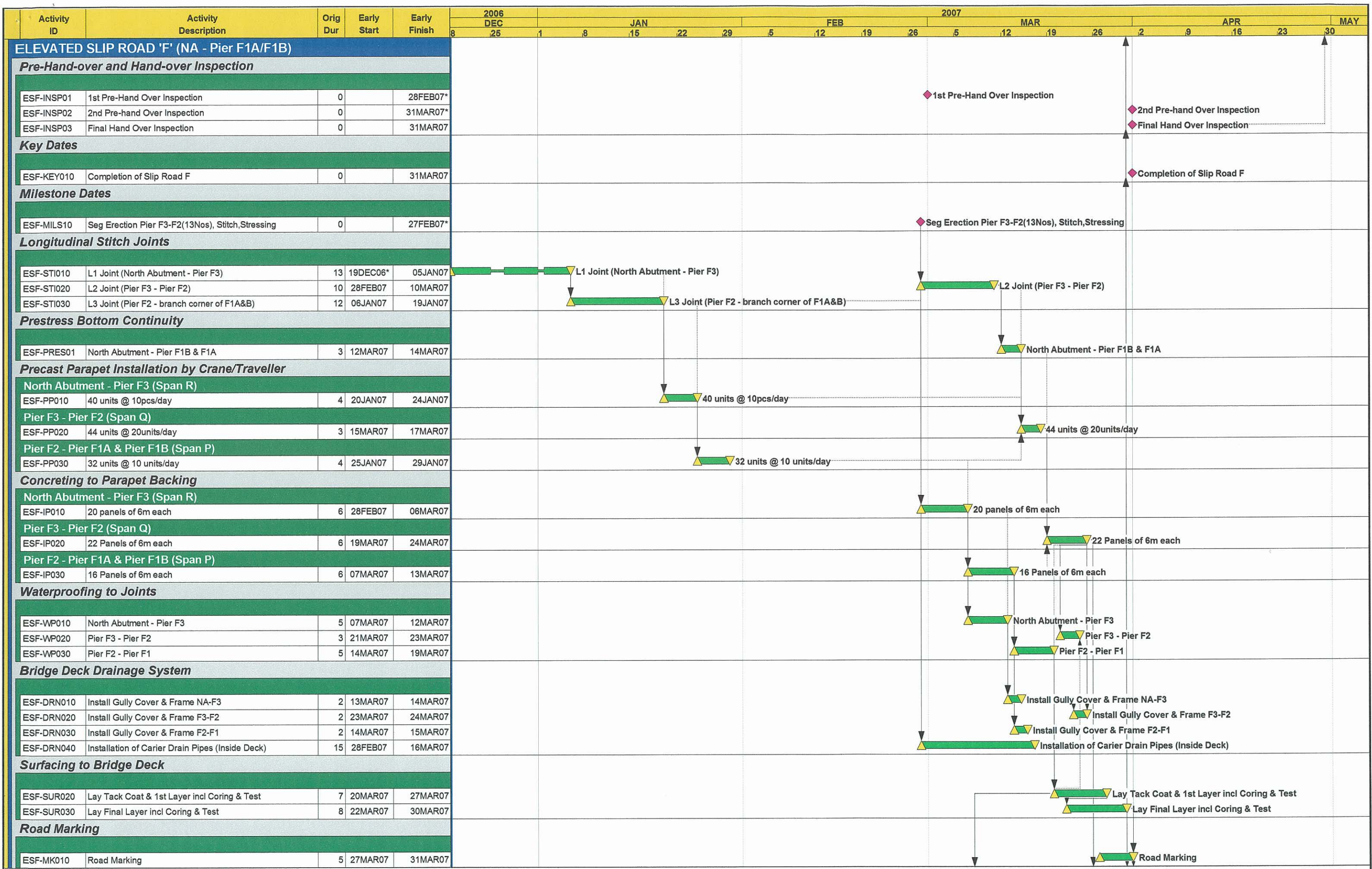
Start Date 19DEC06
 Finish Date 30APR07
 Data Date 19DEC06



WP06
CHUN WO CONSTRUCTION & ENGINEERING CO. LTD.
 CONTRACT NO. HY/2004/09
IMPROVEMENTS TO SAN TIN INTERCHANGE
 Works Programme (WP06)

Sheet 4 of 8

Date	Revision	Checked	Approved
26JUN06	Working Programme Rev. WP04		J. Yip
03OCT06	Working Programme Rev. WP05		J. Yip
23JAN07	Working Programme Rev. WP06	EPG	J. Yip



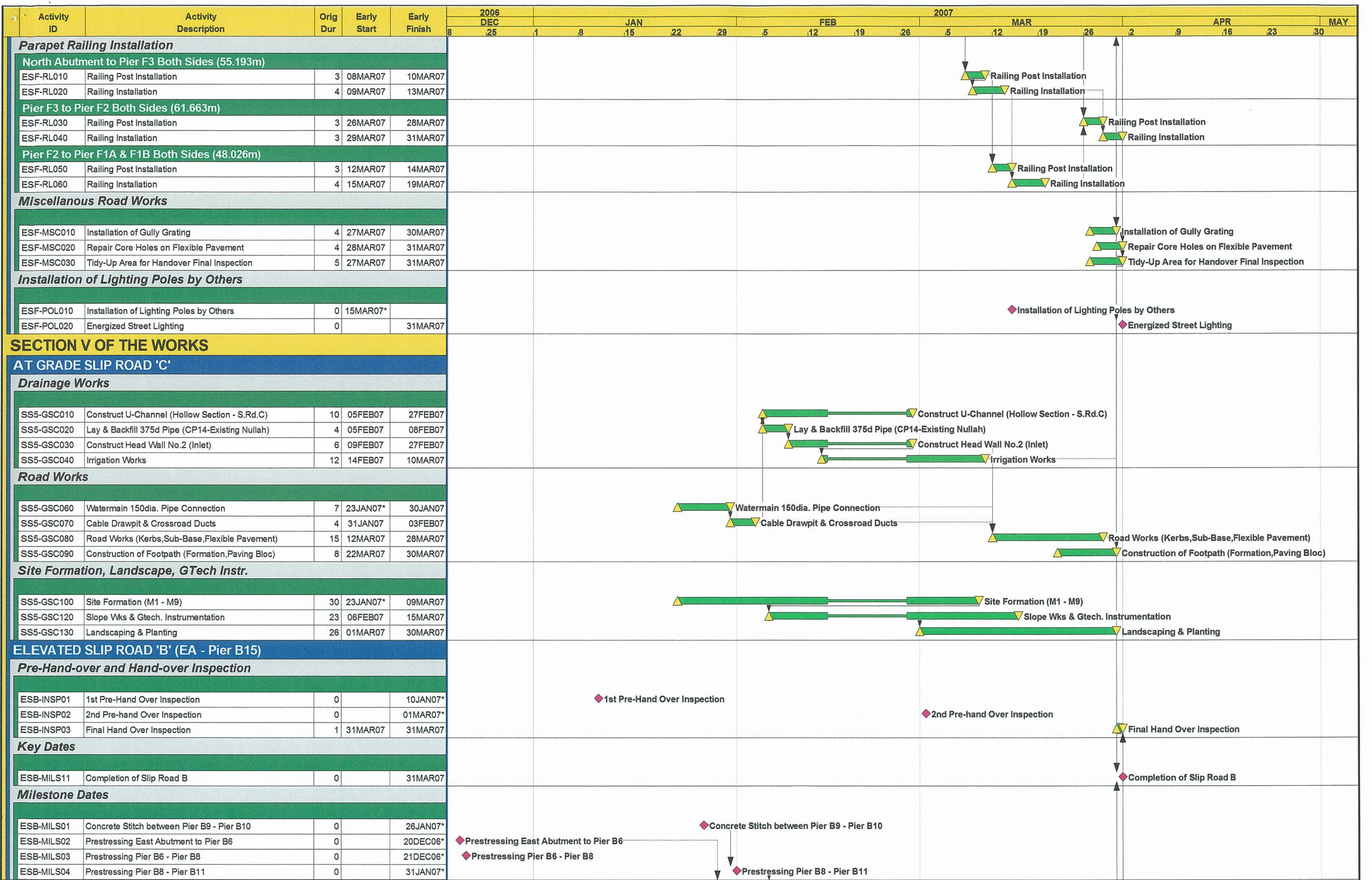
Start Date	19DEC06	Early Bar
Finish Date	30APR07	Progress Bar
Data Date	19DEC06	Critical Activity

WP06

Sheet 5 of 8

CHUN WO CONSTRUCTION & ENGINEERING CO. LTD.
CONTRACT NO. HY/2004/09
IMPROVEMENTS TO SAN TIN INTERCHANGE
Works Programme (WP06)

Date	Revision	Checked	Approved
26JUN06	Working Programme Rev. WP04		J. Yip
03OCT06	Working Programme Rev. WP05		J. Yip
23JAN07	Working Programme Rev. WP06	EPG	J. Yip

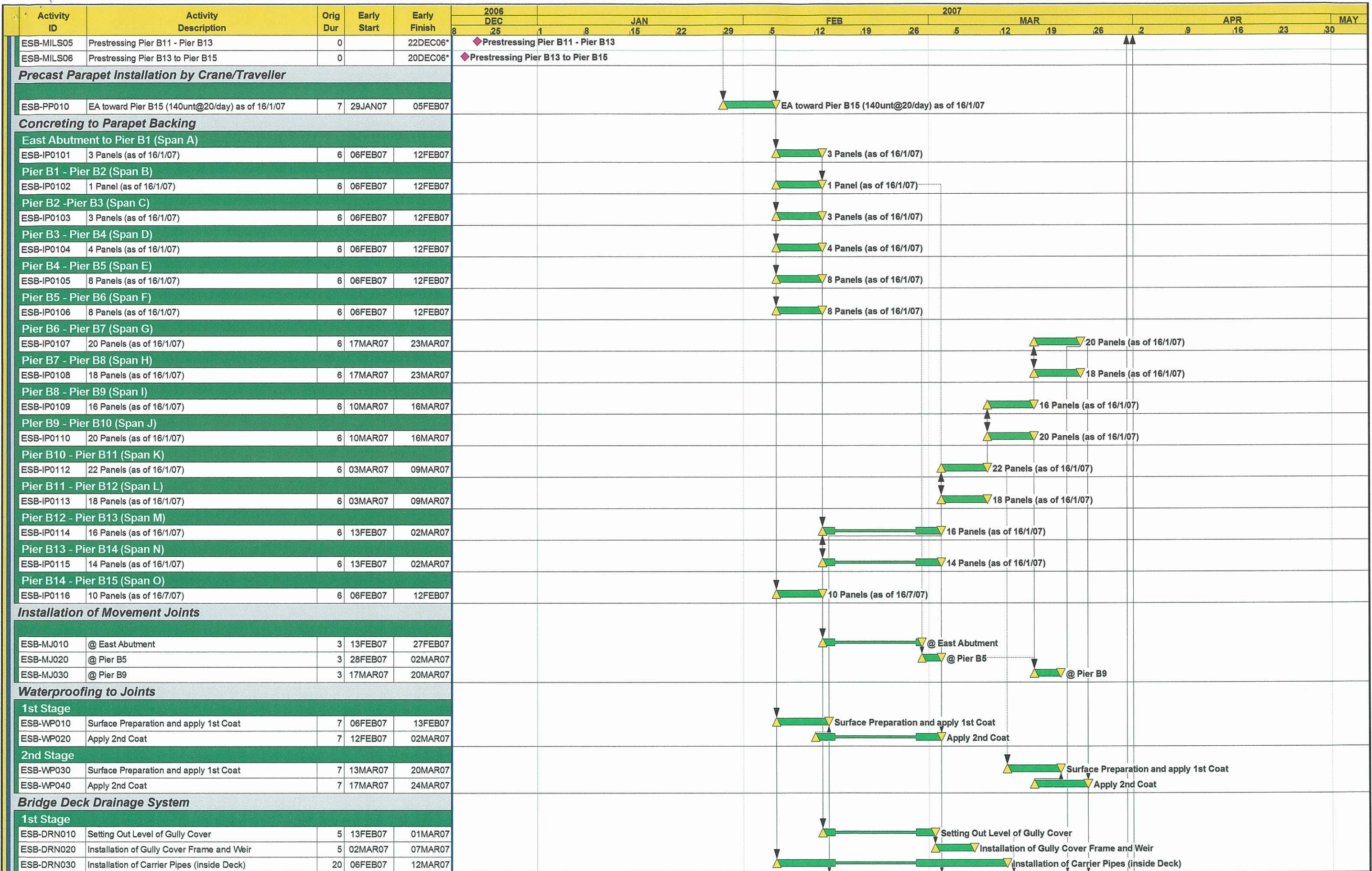


Start Date	19DEC06		Early Bar
Finish Date	30APR07		Progress Bar
Data Date	19DEC06		Critical Activity

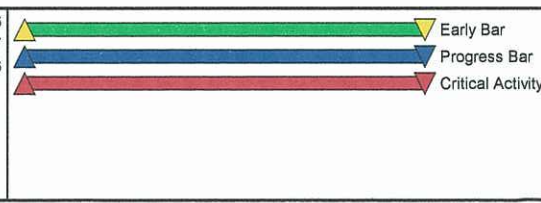
WP06	Sheet 6 of 8
------	--------------

CHUN WO CONSTRUCTION & ENGINEERING CO. LTD.
CONTRACT NO. HY/2004/09
IMPROVEMENTS TO SAN TIN INTERCHANGE
Works Programme (WP06)

Date	Revision	Checked	Approved
26JUN06	Working Programme Rev. WP04		J. Yip
03OCT06	Working Programme Rev. WP05		J. Yip
23JAN07	Working Programme Rev. WP06	EPG	J. Yip



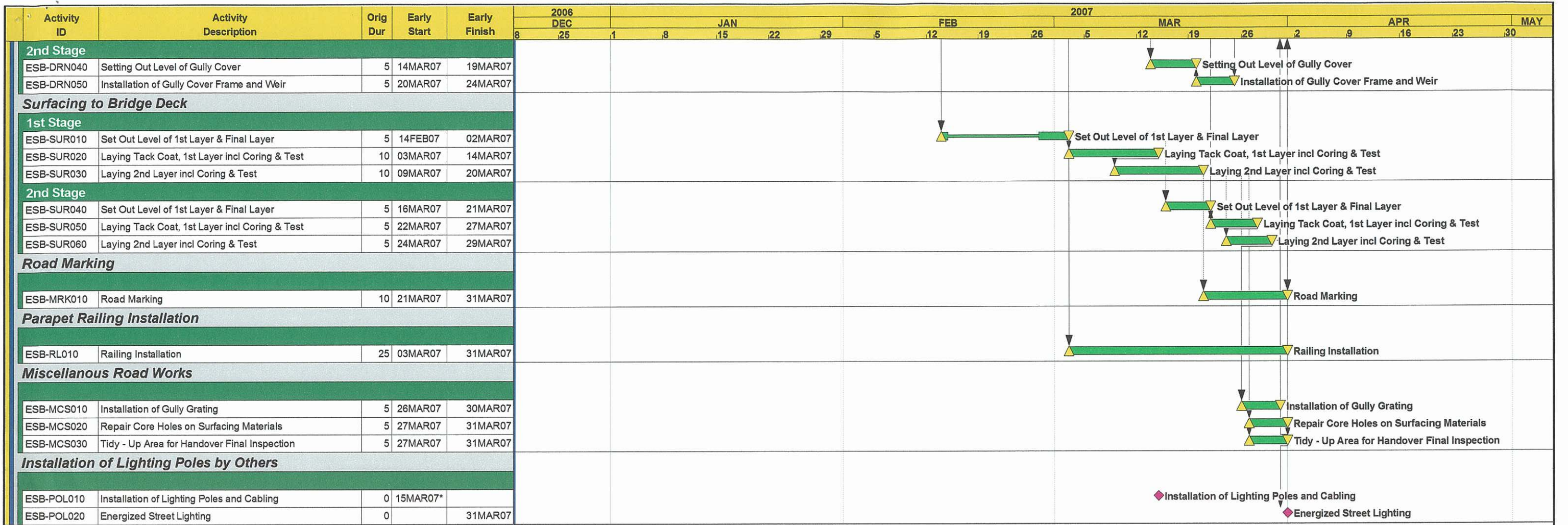
Start Date	19DEC06	▲
Finish Date	30APR07	▶
Data Date	19DEC06	▲



WP06
CHUN WO CONSTRUCTION & ENGINEERING CO. LTD.
 CONTRACT NO. HY/2004/09
IMPROVEMENTS TO SAN TIN INTERCHANGE
Works Programme (WP06)

Sheet 7 of 8

Date	Revision	Checked	Approved
26JUN06	Working Programme Rev. WP04		J. Yip
03OCT06	Working Programme Rev. WP05		J. Yip
23JAN07	Working Programme Rev. WP06	EPG	J. Yip



Start Date 19DEC06
 Finish Date 30APR07
 Data Date 19DEC06



WP06
CHUN WO CONSTRUCTION & ENGINEERING CO. LTD.
 CONTRACT NO. HY/2004/09
 IMPROVEMENTS TO SAN TIN INTERCHANGE
 Works Programme (WP06)

Sheet 8 of 8

Date	Revision	Checked	Approved
26JUN06	Working Programme Rev. WP04		J. Yip
03OCT06	Working Programme Rev. WP05		J. Yip
23JAN07	Working Programme Rev. WP06	EPG	J. Yip